



THE COLLEGE OF
OPTOMETRISTS

Stage Two

Overarching case scenario 34

AGE AND GENDER Female aged 5 years

ETHNIC BACKGROUND Caucasian

OCCUPATION AND HOBBIES Primary School. Dancing and swimming.

PRESENTING SYMPTOMS AND HISTORY. Parents concerned because eyes seem to be crossed. Birth was 2 weeks premature; otherwise normal. Father has "turn" and lazy eye (working today so did not attend). Mother no significant history.

GENERAL HEALTH AND MEDICATION Health good, recent heavy cold but ok now.

PRESENT Rx, CENTRATION AND ACUITIES none

PD/NCD Distance 55, near not recorded

VISION Distance R 6/6+2 L6/6+2 Tested on Snellen chart, points to letters on hand-held chart
Near Cannot read words. Can read the N6 letters that she knows R & L at 25cm

PINHOLE VISION R 6/6 L6/6

REFRACTION R-0.25/-0.25x165 L-0.25/-0.25x120 (good subjective responses for age)
Cyclopentolate 1% R-0.25/-0.25x165 L plano/-0.25x120

VA Distance R 6/5 L6/5
Near Cannot read words. Can read N6 letters R & L at 25cm

ACCOMMODATION R15 L15

BINOCULAR STATUS Pre-cyclo
Distance cover test without Rx ortho. Near cover test without Rx R esophoria, 3Δ
Distance cover test with Rx ortho. Near cover test with Rx R esophoria, 3Δ

MOTILITY Full

CONVERGENCE 15cm

PUPIL REACTIONS Pupils large. Direct consensual and near reflexes present. No RAPD

FUNDUS EXAMINATION See attached

FIELDS Responses unreliable on confrontation

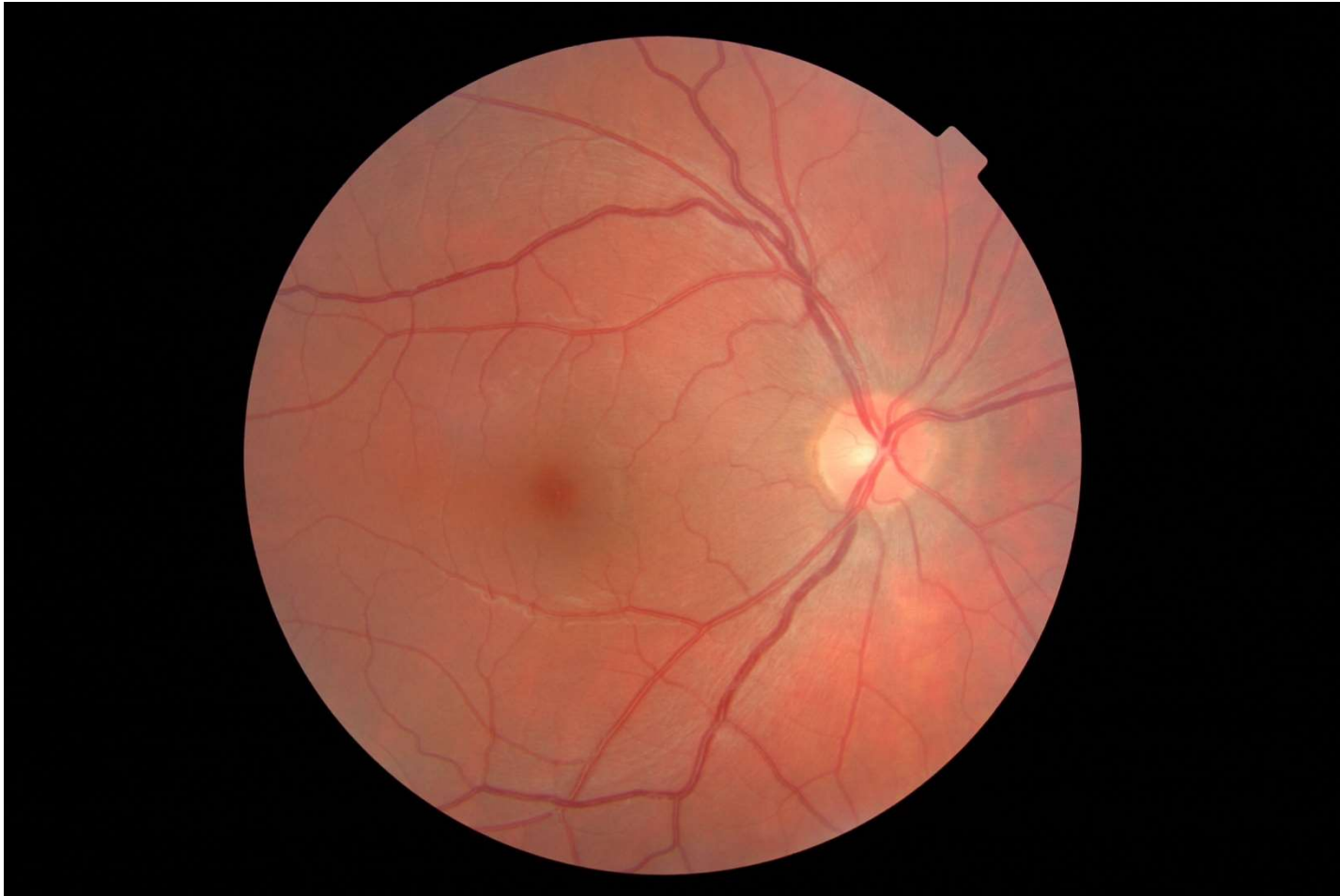
IOP Not done

EXTERNAL EYE EXAMINATION See attached

KERATOMETRY Not done

COLOUR VISION See attached

Fundus RE



R34

Fundus LE



R34

External view



R34

Colour Vision Binocular

ISHIHARA TEST SCORE SHEET (38-PLATE EDITION, 1979)

NAME:

DATE:

PLATE	SCORE	NORMAL	DEFICIENT	TOTAL CB/ WEAK	PROT ANOMALY		DEUTER ANOMALY	
					ANOPIA	ANOPIA	ANOPIA	ANOPIA
1	12	12	12	12	12	12	12	12
2	3	8	3	-				
3	6	6	5	-				
4	29	29	70	-				
5	57	57	35	-				
6	8	5	2	-				
7	3	3	5	-				
8	15	15	17	-				
9	24	74	21	-				
10	2	2	-/X					
11	6	6	-/X					
12	97	97	-/X					
13	45	45	-/X					
14	5	5	-/X					
15	7	7	-/X					
16	10	16	-/X					
17	73	73	-/X					
18	-	-	5	-				
19	-	-	2	-				
20	-	-	45	-				
21	-	-	73	-				
22	26	26			6	(2)6	2	2(6)
23	42	42			2	(4)2	4	4(2)
24	35	35			5	(3)5	3	3(5)
25	96	96			6	(9)6	9	9(6)

NOTES: - no numeral read X incorrectly read A(B) A clearer than B

R34